



• Thank you for purchasing the our product. Before installing, please read the instruction carefully and keep it for future reference.

## Attention!

- For installation, please follow the steps described in manual. Any damage caused by wrong installation shall be imputed to the users.
- Don't break or modify the wire. To avoid the short circuit, please don't pull the wire when installing.
- Do not disassemble or change any parts excluding the manual description.
- The interior examination or maintenance should be executed by our professionals.

◎MARK MEANING:

**NOTE** You could get the installation details from the information behind the mark.

△ Some processes must be followed to avoid the affection caused by wrong installation.

⚠ **WARNING!** Some processes must be followed to avoid damages to yourself or the public.

⚠ **CAUTION!** Some processes must be followed to avoid the damage to the vehicle.



## 1-1 Accessories

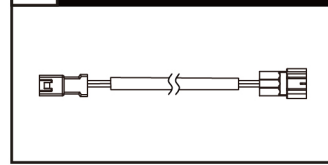
### 1 LCD Meter X1



**NOTE** Contact your local distributor, if the items received in the box are not the same as the items listed above.

## 1-2 Optional accessories

### 1 Aracer ECU WIRE X1



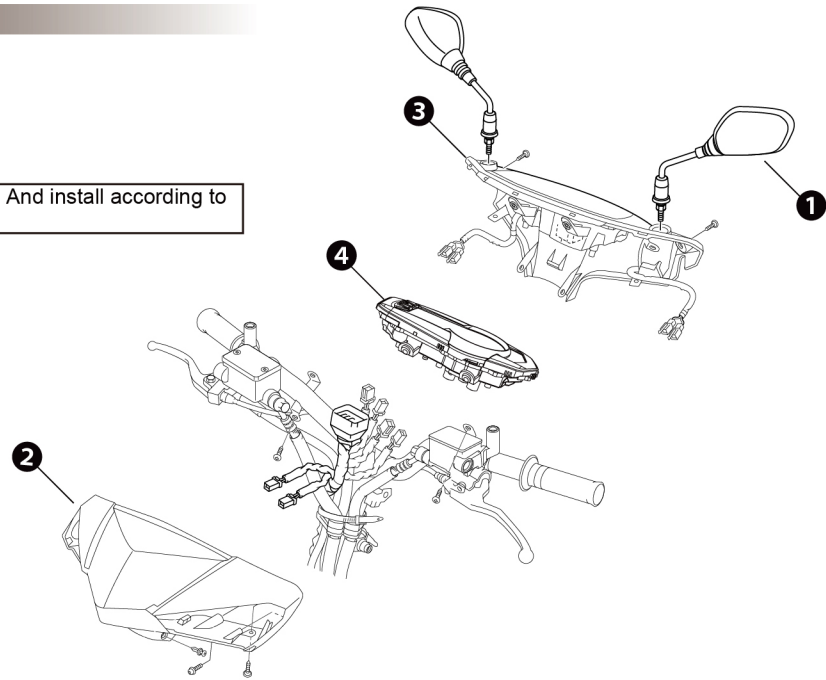
**NOTE** Some of the optional accessories might not be available in your country. Contact your local distributor to get more details.

## 2-1 Installation description

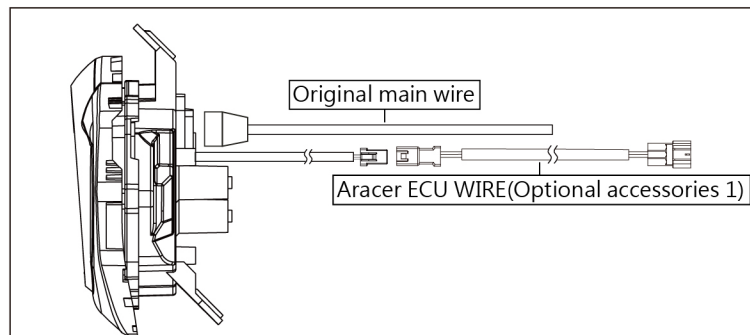
### Please proceed as follows

- 1 Rear view mirror (left and right)
- 2 Handlebar cover (front)
- 3 Handlebar cover (rear)
- 4 LCD Meter (Accessories 1)

**NOTE** Please refer to the icon to disassemble. And install according to the reverse order of disassembly.



## 2-2 Wiring installation instructions



**NOTE** If you replace the Aracer ECU, Meter function can be work when you use Aracer ECU WIRE(Optional accessories 1) and ECU connection.

## 3-1 Basic function instruction

### Tachometer

- Display range : 0 ~ 14,000 RPM

### Indicator

- Turn signal (Green light)
- High beam (Blue light)
- Engine Check (Yellow light)
- Speeding warning (Blue light)
- Temp.warning (Red light)
- Air Fuel Light (Red, Blue, Green light)

### Clock

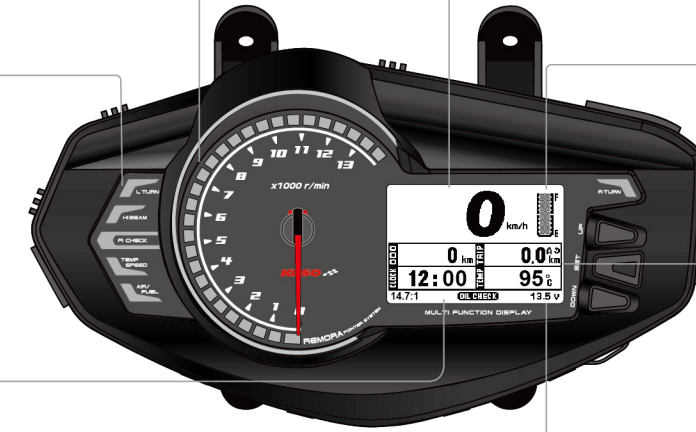
- 12H

### A/F ratio meter

- Display range : 12.1 ~ 17.5 V
- Display unit : 0.1 V

### Thermometer

- Display range : 0 ~ 200 °C
- Display unit : 1 °C



### Speedometer

- Display range : 0 ~ 199 km
- Display unit : 1 km

### Fuel Level

- Display range : 10 levels
- Display unit : Each level represents 10 %

### Odometer

- Display range : 0 ~ 99,999 km
- Display unit : 1 km

### Trip meter A · B

- Display range : 0 ~ 9,999.9 km
- Display unit : 0.1 km

### Motor oil maintenance millage

- Display range : 0 ~ 9,999.9 km
- Display unit : 0.1 km

### Voltmeter

- Display range : DC 8 ~ 18 V

## 3-2 Functions, settings description

• Speedometer	Speedometer : 0 ~ 199 km Display unit : 1 Km	• Fuel consumption	Display range : 12.1 ~ 17.5 V Display unit : 0.1 V
○ Display interval	<0.5 sec	○ Over lean setting	Display unit : 10.1 ~ 19.9 Setting unit : 0.1
○ Odometer	Display range : 0 ~ 99,999 km Display unit : 1km	○ Over rich setting	Display unit : 10.0 ~ 19.8 Setting unit : 0.1
○ Trip meter A · B	Display range : 0 ~ 9,999.9 km Display unit : 0.1 km	○ Sensor type	Display unit : STD · WIDE
○ Motor oil maintenance millage	Display range : 0 ~ 9,999.9 km Display unit : 0.1 km	• Fuel meter	Display range : 10 level Display unit : Each level represents 10 %
○ Overspeed warning setting	Display unit : 30 ~ 199 km Setting unit : 1 km	○ Full fuel	Display unit : 0 ~ 40 Ω Setting unit : 1 Ω
○ Max. speed record	Display range : 0 ~ 199 km	○ Empty fuel	Display unit : 220 ~ 300 Ω Setting unit : 1 Ω
○ Tire section width	Display unit : 50 ~ 200 mm Setting unit : 5 mm	• Clock	12H
○ Tire flatness	Display unit : 20 ~ 100 % Setting unit : 5 %	• Voltmeter	Display range : 8.0 ~ 18.0 V Display unit : 0.1 V
○ Tire size	Display unit : 6 ~ 18 inches Setting unit : 1 inches	• Back light brightness	Display unit : 1(darkest) ~ 5(brightest) Setting unit : Each level represents 20 %
○ Tire percentage	Display unit : 90.0 ~ 110.0 % Setting unit : 0.1 %	○ Back light color	Display unit : white · yellow · orange · red · pink · purple · blue · light blue · green · Loop switch
• RPM	Display range : 0 ~ 14,000 RPM Display unit : 500 RPM Display range : 0 ~ 19,900 (LCD) RPM Display unit : 100 RPM	○ LCD background	Display unit : white, black
○ Display interval	<0.5 sec	○ RPM Bar	Display unit : 0/5(close) ~ 5/5(brightest)
○ Max. rotating speed	Display range : 0 ~ 19,900 RPM	○ LCD Contrast	Display unit : 1/5(light) ~ 5/5(heavy)
○ Cycle / piston setting	Display unit : 0.5 · 1(STD) · 2	• Power TEST Target distance timer test	Display unit : 20 ~ 500 m Setting unit : 10 m
○ Shift light warning setting	Display unit : 3,000 ~ 19,900 RPM Setting unit : 100 RPM	○ Power TEST Target timer test	Display unit : 5 seconds ~ 60 seconds Setting unit : 5seconds
○ RPM Bar	Display unit : REMORA-A · REMORA-B · REMORA-C	• Operating voltage	DC 12 V
• Engine hour	Display range : 0 ~ 999 hours 59 minutes	○ Operating temperature	-10 + 60 °C
• Thermometer	Display range : 50 ~ 200 °C Display unit : 1 °C	○ Specification	JIS D 0203 S2
○ Over temp warning	Display unit : 0 ~ 200 °C Setting unit : 1 °C	○ Meter Size	254.4 X 142.7 X 53.3 mm
○ Max. temperature record	Display range : 0 ~ 200 °C	○ Meter Weight	Around 437 g
		○ Indicator	Turn signal (Green light) · High beam (Blue light) · Engine Check (Yellow light) · Speeding warning (Blue light) · Temp. warning (Red) · Air Fuel Light (Red · Blue · Green light)

**NOTE** Any design and specification changes, will not be notify.

### 3-3 Main menu switching description

● In STD function menu screen, Press the UP button once to enter the multi function menu screen.

● In Multi function menu screen, Press the UP button once to enter the STD function menu screen.

● In Multi function menu screen, Press the UP button once to enter the full function menu screen.

### 3-4 Function menu instruction (SET button)

● ODO screen + Trip A screen, Press the SET button to enter the Trip A screen + Trip B screen.  
● Press and hold the SET button for 3 seconds to reset Trip A screen.

● Trip B screen + Trip Oil screen, Press the SET button to enter the Trip Oil screen + ODO screen.  
● Press and hold the SET button for 3 seconds to reset Trip Oil screen.

● Trip A screen + Trip B screen, Press the SET button to enter the Trip B screen + Trip oil screen.  
● Press and hold the SET button for 3 seconds to reset Trip B screen.

● Trip oil screen + ODO screen, Press the SET button to enter the ODO screen + Trip A screen.

### 3-5 Function menu instruction (DOWN button)

● Clock screen + Temperature screen, Press the DOWN button to enter the temperature screen + Air Fuel screen.  
● Press and hold the DOWN button for 3 seconds to reset Temperature screen.

● Air Fuel screen + Clock screen, Press the DOWN button to enter the clock screen + temperature screen.  
● Press and hold the DOWN button for 3 seconds to reset Air Fuel screen.

● temperature screen + Air Fuel screen, Press the DOWN button to enter the Air Fuel screen + Clock screen.  
● Press and hold the DOWN button for 3 seconds to reset Air Fuel screen.

### 3-6 Full function menu instruction

● Press and hold the UP button for 3 seconds to reset Max record.

● Press and hold the UP button for 3 seconds to reset Max record.

● Press and hold the UP button for 3 seconds to enter Power Test menu.

### 4 Information for setting screen and how to do setting

KOSO REMORA MULTI-METER FOR YAMAHA CYGNUS MKIV 125 - Information for setting screen and how to do setting -



Please scan QR code for information.

### 5 POWER TEST 操作設定

KOSO REMORA MULTI-METER FOR YAMAHA CYGNUS MKIV 125 - Information for power test setting -



Please scan QR code for information.

### 6 Trouble shooting

The following situations do not indicate malfunction of the meter. Check the following points before taking it in for repairs.

Trouble	Check item	Trouble	Check item
The meter doesn't work when the power is on.	<ul style="list-style-type: none"> <li>● The power doesn't supply to the meter. → Please make sure the wiring is connected. The wiring and fuse are not broken.</li> <li>→ The battery is broken or the battery is too old to supply enough power (DC 12 V) to make the meter work.</li> </ul>	Fuel meter does not display or display error.	<ul style="list-style-type: none"> <li>● Check your fuel tank.</li> <li>● Check the wiring harness. → Is the wire connected properly.</li> </ul>
The meter shows wrong information.	<ul style="list-style-type: none"> <li>● Check the voltage of your battery, and make sure the voltage is over DC 12 V.</li> </ul>	Thermometer does not display or display error.	<ul style="list-style-type: none"> <li>● Make sure the ECU wire is connected properly. → check the ECU wire is connected correctly.</li> </ul>
Speed meter does not display or display error.	<ul style="list-style-type: none"> <li>● Make sure the speed sensor is connected properly. → check the speed sensor wire is connected correctly.</li> </ul>	A/F ratio meter does not display or display error.	<ul style="list-style-type: none"> <li>● Make sure the ECU wire is connected properly. → check the ECU wire is connected correctly.</li> </ul>
RPM meter does not display or display error.	<ul style="list-style-type: none"> <li>● Check the setting. → Please check the settings menu, the speed of the settings are correct.</li> <li>● Check the setting. → Please check the settings menu, the RPM of the settings are correct.</li> </ul>	The clock is incorrect.	<ul style="list-style-type: none"> <li>● Check the setting. → Please check the settings menu, the clock settings are correct.</li> </ul>

※ If the problems still can't be solve, please contact your local distributor to get assistance.